



# CLOVERBUD QUARTERLY

St. Croix County 4-H Newsletter for Cloverbud Families

Spring 2017

**UW**  
**Extension**

1960 8th Ave., Suit 140  
Baldwin, WI 54002  
(715) 531-1930

Website: [www.stcroix.uwex.edu](http://www.stcroix.uwex.edu)

Facebook: [www.facebook.com/#!/chriscllover.stcroix](https://www.facebook.com/#!/chriscllover.stcroix)

Heather Vierling, 4-H Youth Development Agent

[heather.vierling@ces.uwex.edu](mailto:heather.vierling@ces.uwex.edu)

Melissa Heath, 4-H Support Staff

[melissa.heath@co.saint-croix.wi.us](mailto:melissa.heath@co.saint-croix.wi.us)

## St. Croix County Community Events

April (TBD) - Easter Egg Hunt (Baldwin)  
April 21-22—RRR 4-H Community Garage  
Sale (Roberts)  
May 12-14—Syttende Mai Celebration  
(Woodville)  
May 13 - May Fair (St. Croix County  
Fairgrounds, Glenwood City)  
June 2-3—Park Art Fair (New Richmond)  
June 8-10—June Bug Days (Baldwin)  
June 10—Yellowstone Trail Heritage Day  
(Hudson)  
June 11—Town N Country Day (River Falls)

## Summer Reading Programs

### St. Croix County Libraries

offer a wide variety of summer reading  
programs for youth of all ages. Contact your  
local library for more information.

Baldwin	715-684-3813
Deer Park	715-269-5464
Glenwood City	715-265-7443
Hammond	715-796-2281
Hudson	715-386-3101
New Richmond	715-243-0431
Roberts	715-749-3849
Somerset	715-247-5228
Woodville	715-698-2430



## Fun at the County Fair!

St. Croix County Fair

July 19-23, 2017

Glenwood City, WI

Judging Day will be on July 19

<http://stcroixcofair.com/fair/>

## Summer At the YMCA

The local YMCA in Hudson offers a variety of youth  
programming during the summer months. Contact  
them at 715-386-1616 for more information on the  
following programs:

- ⇒ Summer Power
- ⇒ Summer Youth Sports
- ⇒ Summer Camps
- ⇒ Summer Childcare





## St. Croix County Fair—Cloverbuds

### General Rules:

- 1.) All Cloverbud entries will be conference judged. Conference judging will be from 12pm—7:30pm on entry day of the fair. Members are to pick up their entry tags from the Junior Fair Office and go to the judging area.
- 2.) All posters/pictures/drawings must be on tag board either 14" x 22" or 9" x 12" (pictures or drawings may be on paper and mounted on tag board).
- 3.) Food exhibits must consist of three items on a plate. Collection exhibit (leaves, flowers, seed, etc.) must consist of five items. Display bases (cardboard, plywood, plastic, etc.) must be no larger than 20" x 20". Cloverbuds may participate in the Clothing Revue and the Foods Revue which will not count toward the 5 or 3 exhibits.

### Class B—Cloverbuds

Premiums: Participation Ribbon  
Only allowed to take 3 items total.

### Ideas for Projects to Bring:

Rock Creature	Vegetable or flower member has grown	Sewing project
Puppet	5 photos member has taken	Craft item
Terrarium	Simple woodworking	Poster
Lego / Model	Display of interesting objects in nature	Brownies/Bars/Cookies

### 4-H Foods Revue

Saturday, June 10, 2017

Morning

UW-Extension Office in Baldwin

#### Rules:

- 1.) Cloverbuds DO NOT set up a table and settings.
- 2.) Any late entries will be dropped one ribbon placement.
- 3.) Cloverbuds bring a nutritious snack and recipe and tell the judge how you made it and why it is nutritious.

### 4-H Clothing Revue / Style Show

Saturday, June 10, 2017—Afternoon

UW-Extension Office in Baldwin

#### Rules:

- 1.) All members must take part in the Style Show at the St. Croix County Fair. Entries will be judged on suitability of the garment to the individual, general appearance of the costume, and accessories and fit.

### Class G—Cloverbud Clothing Revue

See the Clothing Revue Form in the back of the newsletter.

## June is Dairy Month!!!

Want to have breakfast on the farm?  
Looking for a new recipe? Check out all  
of the fun at [http://  
www.dairydaysofsummer.com/](http://www.dairydaysofsummer.com/)



St. Croix County 4-H Leaders  
Association meetings are  
the 3rd Tuesday of the month  
at 7:00 pm at the St. Croix  
County UW-Extension Office

# 4-H Day Camps

## 4-H SCHOOL OF MAGIC, WIZARDRY, AND IMAGINATION



St. Croix County 4-H is offering two unique Clover-bud / Exploring Day Camp experiences for 2017. Participate in one or both day camps for a truly fun and magical experience.

### 4-H Magicians Laboratory

- \* June 15, Paper Jack Park, New Richmond
- \* June 16, Mill Pond Park in Baldwin



### 4-H Wizards Laboratory

- \* August 10, Paper Jack Park, New Richmond
- \* August 11, Mill Pond Park in Baldwin

All day camps run from 9am—3pm. The cost of registration is \$5.00/camp or \$8.00 for both camps, and includes all activities and snacks. All youth need to bring a bag lunch. Non 4-H youth are welcome and encouraged to participate.

St. Croix County 4-H Youth Development Programming



**UW**  
**Extension**  
University of Wisconsin-Extension

St. Croix UWExtension  
1960 8th Ave.  
Suite 140  
Baldwin, WI 54002

Phone: 715-531-1930  
Fax: 715-684-2666  
Email:  
heather.vierling@ces.uwex.edu



# Registration Form



## 4-H SCHOOL OF MAGIC, WIZARDRY, AND IMAGINATION

Are you looking for a day full of lively learning and adventure? Join St. Croix County 4-H at this year's *4-H School of Magic, Wizardry, and Imagination*. Youth (Kindergarten through 3rd grade) will participate in a day filled with fun hands on learning, games, songs, and snacks. Participants will also have the opportunity to meet and engage with youth from around the county. Participate in one day or both. Non 4-H youth are welcome and encourage to participate.

Place a check mark next to the camps you plan to attend.

### 4-H Magicians Laboratory

- ◇ June 15, Paper Jack Park, New Richmond
- ◇ June 16, Mill Pond Park in Baldwin

### 4-H Wizards Laboratory

- ◇ August 10, Paper Jack Park, New Richmond
- ◇ August 11, Mill Pond Park in Baldwin

*Please complete a separate registration form for each child*

Name: \_\_\_\_\_

Grade: \_\_\_\_\_

4-H Club: \_\_\_\_\_ (if applicable)

Address: \_\_\_\_\_

City/ Zip: \_\_\_\_\_

Phone #: \_\_\_\_\_

Emergency Contact: \_\_\_\_\_

Emergency Phone Number: \_\_\_\_\_

Parents Signature \_\_\_\_\_

Please list any health concerns or allergies: \_\_\_\_\_

**Camp Cost:** \$5.00 / camp or \$8.00 for both camps

Campers registration and registration fees are due by **June 5** to: Please make checks to St. Croix 4-H Leader's Association. Mail registration and check to 1960 8th Ave., Suite 140, Baldwin, WI 54002.



## Tortilla Pizza Bites

### Ingredients:

Tortillas (whole wheat)

Shredded Cheese

Pizza Sauce

Toppings (pepperoni, green peppers, mushrooms, spinach, tomatoes, pineapple, etc.)



Preheat oven to 350 degrees. Using a circular cookie cutter cut out 12 circles from your tortillas. Place tortilla circles in a muffin tin. Cover each with sauce, cheese and toppings. Bake for 10-15 minutes or until cheese is melted and all ingredients are heated through.

# Homemade Playdough

Play dough is the stuff childhood is made out of. Even better if the child could make the play dough! With this no cook recipe, you could have a pint-sized assistant make this half-pint of wonderful dough!

### Supplies Needed:

1/2 cup salt

2 tablespoons of cream of tartar

2 cups all purpose flour

2 tablespoons vegetable oil

Up to 1 1/2 cups boiling water (add in increments until it feels right)

Food coloring

A few drops of glycerin (optional—adds more shine)

### Instructions:

- Mix the flour, salt, cream of tartar and oil in a large mixing bowl.
- Add food coloring (optional) to the boiling water. Then add the water into the dry ingredients a little bit at a time.
- Stir continuously until it becomes a sticky, combined dough.
- Add the glycerin (optional).
- Allow it to cool down then take it out of the bowl and knead it vigorously for a couple of minutes until all of the stickiness has gone. This is the most important part of the process, so keep at it until it's the perfect consistency! (If it remains a little sticky then add a touch more flour until just right)
- If placed in an air tight container the dough will last up to six months.



### Questions You Can Ask Youth:

- 1.) What was difficult about making playdough?
- 2.) How could we change the consistency of the dough?

### Share / Reflect:

You could make the playdough and give it as a gift to a friend or sibling.

## THE SECRET LANGUAGE OF PLAY

Adapted from: Dr. Molly Gerrish, Associate Professor of Early Childhood

Play is one of the most influential ways children can show growth and development throughout childhood domains, such as: cognitive, social, emotional, and physical development.

Through play, children are able to take charge of a situation that may be new or scary, such as going to the doctor or having a new sibling at home.

When children are able to take on a role in their play and act out their feelings, it gives them a sense of control over their lives.

- Play teaches important skills that worksheets or flashcards cannot
- Social Abilities: Negotiate roles, conversing, sharing, turn-taking, cooperation
- Emotional Strength: (can re-enact disappointment, fear, and anger) This helps them understand their feelings and empathize with others.
- Creativity: Coming up with play scenarios, roles, and use of materials
- Fine Motor: Buttons, snaps, dresses self and dolls, sets the table
- Language: Shares ideas, communicate, learn about community and adult roles
- Literacy: Emerges through shopping lists, menus and phone messages
- Mathematics: Pouring, serving, counting out plates, taking turns on the playground.
- Discipline / Responsibility: Practice rules, practice / re-enact routines, clean up, choose play materials and partners
- Resiliency: Offers a release of stress and can help children overcome fears and misunderstandings

A learning adventure. As parents, we need to remember that what does not look like much to us can be a real learning adventure for children. For example, there's no need to buy expensive toys or electronic gadgets in order for your child to get the most out of their play. In fact, real world objects and experiences offer more opportunities for learning than a toy that is simply a "spectator toy" where the batteries do all the work.

Keep in mind the role that the adult plays, too. By listening to and observing children at play you can get an idea of their learning style, how they communicate, their ideas and their language as well as what interests them. Take every opportunity to let children figure things out. It may take longer, but it is worth it to see a child accomplish a task they have never done before. Play lays the foundation for a love of learning that will last a lifetime!

# 2017 4-H STYLE REVUE REGISTRATION FORM

**Date:** Saturday, June 10, 2017

**Time:** Afternoon

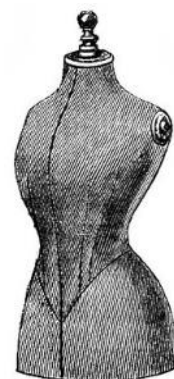
**Location:** St. Croix County UW-Extension Office, 1960 8<sup>th</sup> Ave., Baldwin, WI 54002

**Registration Deadline:** May 31, 2017

NAME \_\_\_\_\_ COUNTY \_\_\_\_\_

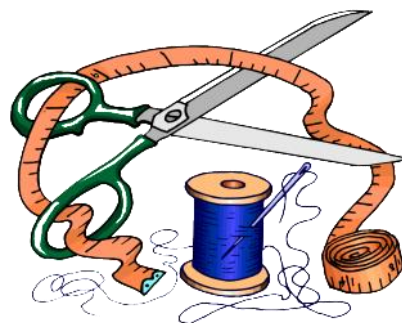
CLUB \_\_\_\_\_ GRADE \_\_\_\_\_

ADDRESS \_\_\_\_\_ CITY \_\_\_\_\_



**Open to Members enrolled in the Cloverbud Project (Dept. 26, Class G):**

- 1 \_\_\_ Beach or Bath Robe
- 2 \_\_\_ Nightgown or Pajamas
- 3 \_\_\_ Skirt, Split Skirt, pant skirt, or gauchos
- 4 \_\_\_ Blouse, Top, or Boy's Shirt
- 5 \_\_\_ Sweat Shirt or T-shirt
- 6 \_\_\_ Vest
- 7 \_\_\_ Shorts, Pants, Capris, or Clam Diggers
- 8 \_\_\_ Shorts / Pants and Top (sweat suit included)
- 9 \_\_\_ Dress
- 10 \_\_\_ Costume
- 11 \_\_\_ Knitted or Crocheted Cap or Scarf
- 12 \_\_\_ Knitted, Crocheted, or Sewn Purse (to be modeled with a garment it accessorizes/accents)



## 4-H Conference Judging

### What is 4-H conference judging?

A 4-H member sits down with the judge at the fair and talks with them about their 4-H exhibit. Judges will award ribbons and placings according to the exhibitor's knowledge about the exhibit and the quality of the exhibit.

### How do you prepare for conference judging?

Before the county fair, sit down and answer the following questions about your exhibit (s). It's okay to have a parent or brother / sister help you and it's good practice! Be sure to practice talking loudly and clearly so you can be understood.

### What will the judge ask?

What is your name? How many years have you been in 4-H? What club do you belong to?

Next the judge will ask you a series of questions about your exhibit.

### Cloverbud 4-H Members

4-Hers who are enrolled in the Cloverbud Project will go through the same experience as older 4-H members, so they should also prepare to talk to a judge about their exhibit. One difference between the two is that Cloverbud members will not be asked nearly as many questions nor will they be expected to know as much as an older 4-H member. Think of Cloverbud judging as simply having a conversation with an adult; there is no competition involved.