



## *Cloverbud Day Camp* **GEARS, GIZMOS, & GADGETS**



## *Partner Programs* **SOMERSET LIBRARY**



SEPTEMBER 2025

### **Inside this Issue**

Calendar	2
Leader News	3
Club Information	7
4-H Committees	8
Friends of the Fair	10
WI 4-H News	11

#### 4-H Pledge

"I pledge my HEAD to clearer thinking,  
my HEART to greater loyalty,  
my HANDS to larger service,  
and  
my HEALTH to better living,  
for my club, my community,  
my country, and my world."

Heather Vierling

4-H Program Educator

heather.vierling@wisc.edu

715-531-1938

#### **Office Hours:**

Monday - Thursday

8:00 am - 4:30 pm

Due to community work, trainings and meetings please call ahead to our office to ensure that someone will be here to support your needs. We don't want you to make unwanted or unnecessary trips.





# Calendar

## September

- 1 UWEX Office Closed - HOLIDAY
- 1 2025-2026 Charter Application Opens
- 4 Member Re-Enrollment Opens in 4-H Online
- 4 Volunteer Re-Enrollment Opens
- 8 Club Award Packets Due
- 8 Youth Horse Project Meeting
- 9 Livestock Committee Meeting
- 13 4-H Day at New Richmond Heritage Center



## October

- 5 National 4-H Week Begins
- 11 National 4-H Week Ends
- 12 Horse Project Banquet
- 21 End-of-Year Banquet/ Leaders' Association Meeting
- 25 Healthy Bodies County-Wide Event



## November

- 1 2025-2026 Charter Application Closes
- 1 Volunteer Re-enrollment Closes

### UW– Madison, Division of Extension Non Discrimination Policy

Periodically, UW-Madison takes steps to ensure that our partners know and understand our policy of non-discrimination. This is to remind or notify you that the University of Wisconsin Madison, Division of Extension does not discriminate in the treatment of individuals in the admission or access to its programs and activities, in the provision of services, or in employments.

Further, UW-Madison will not participate with organizations or in activities, which discriminate on the basis of any of the prohibited categories of discrimination. Categories of prohibited discrimination include: race, color, gender/sex, creed, disability, religion, national origin, ancestry, age, sexual orientation, pregnancy, marital or parental status, arrest or conviction record, or membership in the National Guard, State Defense Force, or any other component of military services.

Consistent with the Americans With Disabilities Act, persons who need materials in alternative format or other accommodation must write or call the UW-Extension contact person for the specific program or call the main telephone number of St. Croix County UW-Extension (715) 531-1930, 1960 8th Ave., Suite 140, Baldwin, WI 54002 at least 10 working days prior to the event. Individuals who need TDD/TTY access, can call 711 for relay assistance.

The University of Wisconsin Madison, Division of Extension staff in St. Croix County thanks you for collaborating with our many educational endeavors. We appreciate your support and working relationship as we provide educational programs designed to empower the diverse citizens of St. Croix County.



Extension  
UNIVERSITY OF WISCONSIN-MADISON  
St. Croix County



<https://stcroix.extension.wisc.edu>

1960 8th Ave. Suite 140  
Baldwin, WI 54002  
715-531-1930

 [facebook](#)

 [@instagram](#)

## St. Croix County 4-H Leaders Association Meeting

October 21st  
End-of-Year Banquet  
TBD

Agenda will be sent out prior  
to the meeting.

Zoom available *upon request*



## Reminder: 4-H Event Insurance

This insurance will cover all participants (youth/adult, 4-H and non 4-H). The cost is \$0.30/person/day. Please fill out this form to request insurance a week before your event:

<https://forms.gle/Pk9S1xxmXfHmYtgE8> or email Laura @ [laura.hinz@wisc.edu](mailto:laura.hinz@wisc.edu)

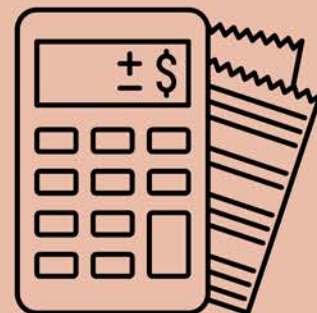
### Event that require additional insurance include:

- ☐ Horseback Riding ☐ Mountain Biking
- ☐ Shooting Sports ☐ Downhill Skiing/Snowboarding
- ☐ Go-Karts ☐ Bounce House or Moonwalk
- ☐ Challenge Course or Zip Line
- ☐ Fun Run/Walks ☐ Tractors
- ☐ Roadside Clean-Up
- ☐ Sledding/Tobogganing/Tubing
- ☐ ATVs or UTVs
- ☐ Waterfront: Paddle Sports
- ☐ Waterfront: Swimming



## 4-H Financials / Charters

It's that time of year again. July 1 marks the beginning of our new 4-H fiscal year. Please remember to complete your 2024-2025 financials. **AFR's were due to the St. Croix County Extension office by August 15th. If you have not yet turned in your report, please do so ASAP!**



1. Wisconsin 4-H Clubs & Groups [Annual Financial Report](#)
2. Wisconsin 4-H Clubs & Groups [Audit Checklist](#)
3. A copy of the checkbook and/or savings registry covering July 1 – June 30
4. A copy of the bank statement ending June 30 or July 1 for each account. Any differences between the bank statement(s) and the ending balance reported must be reconciled and the reconciliation must be uploaded with the Annual Financial Report.
5. A current inventory of land, buildings, property, or project equipment with individual values of \$2,000 or greater.
6. Monthly Treasurer's Reports for 4-H Clubs or Groups with annual income greater or equal to \$20,000.



# **Leaders' Association Elections 2025-2026**

Leaders' Association elections happen annually at the Leader's Association meeting held each October of the calendar year. A simple majority vote will occur at the meeting to select the individuals to hold the board positions. Self-nominations are acceptable for any position or can be nominated by an individual. Although a leader does not need to be present to be nominated, they need to accept the nomination prior to voting. All enrolled 4-H adult and youth leader members are eligible to vote.

## **President-Elect (3 year term)**

- Assist the president in his and/or her duties and assume the president's duties when he and/or she is unable to fulfill them.
- Assume the presidency the following year following the annual meeting.
- Should the member be elected the second year of their term, shall remain on the St. Croix County Leaders Association for an additional year as the presiding president.
- Be an authorized signature on all checking accounts, savings accounts, and certificates of deposit for the St. Croix County Leaders Association.
- Fulfill the position of St. Croix County Leaders Association- Treasurer, should the presiding treasurer be unable to fulfill his and/or her duties, until the vacancy is filled.

## **Secretary (1 year term)**

- Record minutes of all meetings of the St. Croix Leader's Association and submit within one week of the prior meetings to the UW-Extension Office.
- Maintain records of all St. Croix County Leaders Association minutes and correspondence.
- Submit minutes of previous meetings at all association meetings and make available via the 4-H website as a digital resource.

## **Co-Treasurer (3 year term)**

- Comply with all financial policies
- Work with the authorized 4-H volunteer who was the predecessor on the bank account to fulfill these duties of the treasurer for the first year of term; during their last year of term, they will advise the presiding elected treasurer.
- May serve two consecutive terms with a maximum of six years holding the position.
- Maintain accurate and updated financial records of the St. Croix County Leaders Association.
- Collect and disperse funds as authorized by the St. Croix County Leaders Association in addition to the UW-Extension 4-H Youth Development Agent for St. Croix County.
- Maintain all county, club, and committee financial records at the St. Croix County UW-Extension Office.
- Work with the St. Croix County UW-Extension agent to file county, club, and committee tax records by the deadline listed and submit records for a financial audit.
- Serve as the fiscal agent for varying 4-H functions and trips.

## **Adult Director ( 2 year term)**

- Must be an enrolled volunteer within St. Croix County 4-H.
- Provide a voice for adult and youth leaders of the association without holding an office position.



# Policy Updates for 2025-2026

## • Volunteer Re-enrollment

All returning Wisconsin 4-H volunteers are required to re-enroll annually between September 1 and November 1. All required trainings and background checks must be completed by December 1. The 4-H Program Educator or their designee has until December 15 to approve all eligible returning 4-H volunteers. **IMPORTANT:** A submitted application/enrollment form does not mean that an individual is an approved volunteer. Adults who are not approved 4-H volunteers cannot be in custodial care of youth.

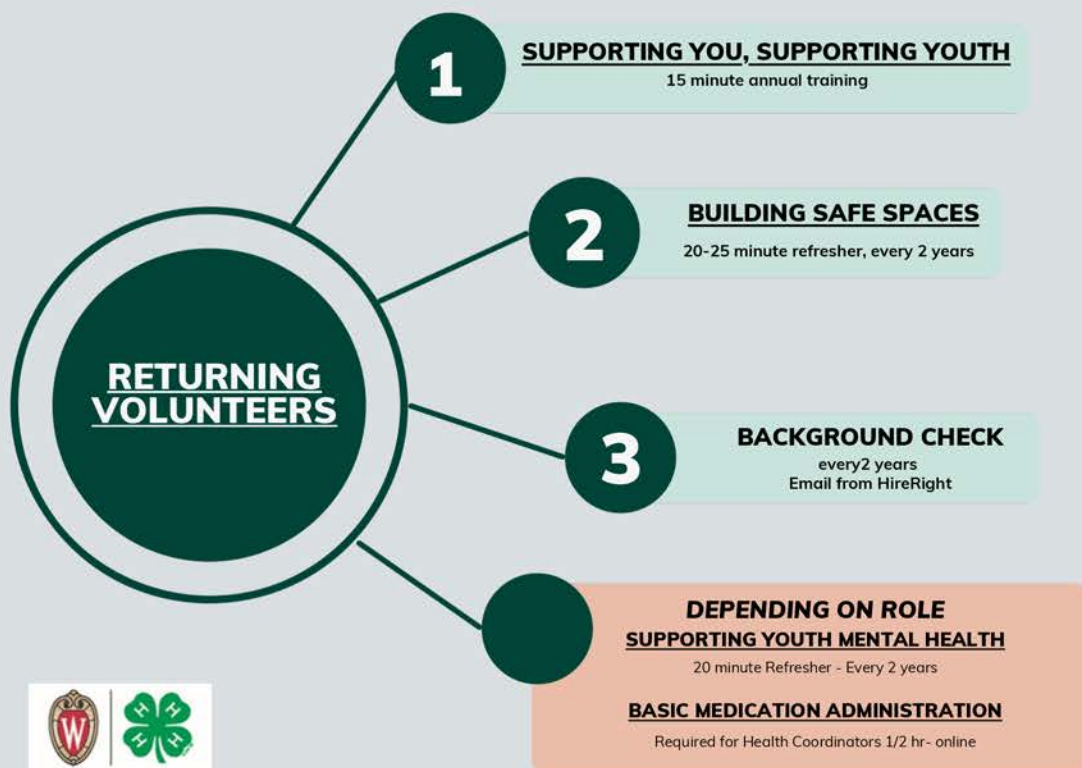
## • Record Books

Wisconsin 4-H does not require a record book for membership. Individual 4-H clubs and groups cannot mandate that youth submit a record book to maintain their membership status. However, 4-H Program Educators, 4-H Clubs and/or 4-H Groups may create recognition programs where record books are considered as part of the criteria for selection of awards, scholarships or participation in specific activities.

## • Alumni Groups

4-H Leader Organizations may establish 4-H Alumni Committees focused on fostering networking opportunities for 4-H alumni, promoting alumni involvement in the 4-H program through roles such as guest speakers or volunteers, and supporting fundraising efforts for the Leader Organization. These committees will consist of approved 4-H volunteers; however, the committee could plan events open exclusively to 4-H Alumni with 4-H Program Educator approval.

**For more information on updated policies, existing expectations, or groups roles, please visit the Wisconsin 4-H Policies Page or contact Heather Vierling at [heather.vierling@wisc.edu](mailto:heather.vierling@wisc.edu).**





## 4-H Day with the Leader's Association



Saturday, September 13th



9:00am - 12:00pm



New Richmond Heritage Center



Youth interested in the 4-H will learn more about the program and have hands on learning opportunities.

Please pass along to anyone and everyone that might be interested!

If you are interested in helping out, please contact Lori DeBoer at 715-491-0221.



### 4-H Healthy Bodies Event



Saturday, October 25th



9:00am - 1:00pm



New Richmond, WI



Join us in partnership with the hospital foundation for a half-day of healthy living. Learn about basic first aid and CPR, ways to keep our bodies healthy, and helping those around us. All 4-H'ers and friends welcome. Recommended for grade 5+.

### Tractor Supply Co. Trunk-or-Treat



Saturday, October 25th



9:00am - 3:30pm



Tractor Supply Co.  
1810 Dorset Lane, New Richmond

TSC is looking for organizations to participate with trunks. Join them if you can! They have been a great supporter of our local 4-H youth.

For more information, contact Aurora at  
715-243-5810.





# Club Information



UW-MADISON EXTENSION



## **2024-2025 4-H Club Award and Banquet**

Club award packets were sent out to club leaders (via email) on August 6th. Please review the packet, as some of the awards have changed. All club award packets are due to Heather (email or snail mail) by **September 8th**. Awards will be ordered and delivered to clubs in October. If you have questions on the Club Award Packet, please contact Heather at 715-531-1938.

The End-of-Year Banquet will be held on Tuesday, October 21st. Dinner will begin at 6:30pm. More details to come! Please watch your email.

## **Wisconsin 4-H Annual Charter Application 2025-2026**

The 4-H Charter indicates that a 4-H Club or Group is organized in accordance with the objectives of the Wisconsin 4-H program. The University of Wisconsin-Madison, Division of Extension grants 4-H Charters which formally authorizes a Wisconsin 4-H Club or Group to use the 4-H Name and Emblem for educational purposes in accordance with laws and regulations established by Congress and the U.S. Department of Agriculture. In addition, the 4-H Charter Application provides:

- Documentation of educational activities of the 4-H Club or Group/Committee needed for liability coverage for 4-H volunteers and members
- Program impact evaluation and educational planning
- Documentation of compliance by 4-H Clubs and Groups with EEO, ADA guidelines, and Civil Rights laws.

**Wisconsin 4-H Club and Group Charter Application will be posted September 1st and must be completed online by November 1. Access Charter Application [Here](#).**

## **2024-2025 Re-Enrollment**

All 4-H members are required to re-enroll in the program each year in order to be considered an current 4-H member and continue their participation.

**August 28<sup>th</sup>:** 2024-2025 4-H year ends

**August 29<sup>th</sup>:** 4-HOnline closes to families

**September 4<sup>th</sup>:** 4-HOnline opens for re-enrollment

If you attempt to re-enroll prior to September 4<sup>th</sup>, your enrollment will not be approved for 2025-2026. For enrollment assistance, contact Heather.

# 4-H Committees



UW-MADISON EXTENSION

## Horse Project News

### Upcoming 2025 Youth Horse Project Meetings - Ag Center

- Youth Meeting
  - Monday, Sept. 8<sup>th</sup>, 7:00
  - All project meeting 7:30



### Special Events - Ag Center unless otherwise noted

#### **PLEASE NOTE BANQUET DAY AND VENUE CHANGE**

- Annual year end banquet and annual meeting
  - Sunday, Oct 12th, 6:00 pm
  - 4Six The Social Barn, New Richmond, WI

If you have any questions on the St. Croix County Youth Horse Project, please email [stcroixcountyhorseproject@gmail.com](mailto:stcroixcountyhorseproject@gmail.com)

## **Livestock Committee Meeting:**

Tuesday, Sept 9th  
7 pm

UW-Extension Office



# St. Croix County 4-H Dog Project Agility and Rally Show Annual Banquet

**Saturday, September 13th**

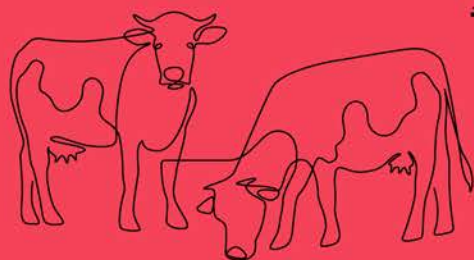
**Agility/Rally Show @ 10:00 am**

**Lunch and Annual Awards Banquet to follow  
@ Overdale Canine Sports S1000 Westland Dr.  
Spring Valley, WI 54767**

- All are welcome to attend and cheer on our agility and rally teams!
- **RSVP [dogprojectstcroix@gmail.com](mailto:dogprojectstcroix@gmail.com)**
- Sandwiches will be provided please bring a side or dessert to share.
- Awards will be given to each member.







## **Dairy Committee Meeting:**

Wednesday, January 21st  
7:00 pm

UW-Extension Office



## **James W. Crowley Dairy Leadership Award**

The 4-H Dairy Leadership Award provides recognition to youth who have excelled in their dairy project. As of 1989, the James W. Crowley Dairy Management and Extension Fund assumed sponsorship of this award.

Applications are due to the Dairy Committee by January 1<sup>st</sup>, 2026.

Applications can be found on the St. Croix County Extension website:

<https://stcroix.extension.wisc.edu/4-h-scholarships-awards/>

Please forward completed applications to Mary Luckwaldt at luckwaldt123@yahoo.com

## **Heritage Dairy Heifer Calf Applications:**

The St. Croix 4-H Dairy Committee is sponsoring a Registered Dairy Calf Award to one outstanding 4-H member. Interested members are asked to write a short essay (100 words or less) answering the following prompt: What would owning your own registered dairy calf mean to your 4-H experience?" Applicants are also asked to list their involvement in 4-H and dairy project activities. *Applicants may be asked back for an interview with the selection committee.*

Applications are open to all 4-H members and are due by January 1<sup>st</sup>, 2026.

Applications can be found on the St. Croix County Extension website:

<https://stcroix.extension.wisc.edu/4-h-scholarships-awards/>

Please forward completed applications to Mary Luckwaldt at luckwaldt123@yahoo.com

The Dairy Committee will pay registration transfer fees. Previous winners are not eligible. Decisions of the judges are final.



## News:

1. The 2025 Maytober Sale will again be hosted as an online auction by Smith Auctions, the close date is November 5th at 6p.m. A special thank you to Jody Close, Smith Auctions!
2. Fall Commodity Drive – Corn harvest is around the corner. We are looking for donations either picked up at the field or designated at the elevator. Contact Terry Mitchell (715) 619-0442 or Chris Libbey (651) 247-0395 for details.
3. Wanted – 4-H clubs who can use some extra financial support for their projects, see details below.
4. A big thank you to all that supported our 2025 50:50 cash raffles. Both raffles were sold out!!

**Maytober Donations & Bidding information:** Maytober is truly a “soup to nuts” auction conducted by Smith Auctions with the seller’s fee donated – if it sells for a \$1.00 Friends receives a \$1.00. We need help on two fronts: 1. Donations of literally anything that has value & 2. Willing bidders. To register to bid, simply go to the Smith Auctions web site and follow the instructions. If you have anything to donate, please contact Chris Libbey (651) 247-0395 or Terry Mitchell (715) 619-0442. Donations of used ag equipment are great; for large items, we are also open to consignment. Proceeds will be used towards retiring the loan on the Tiffany Creek Shelter.

**Club Development Grants:** Friends has a budget of \$2,500 to support Club Development Grants. Grants can be used for literally any project that helps the clubs thrive; service projects to recreation.

We are accepting applications through the end of September. Our goal is to help enrich programming for the 2025-2026 Club Year. Contact Steve Smart at [desscs51@baldwin-telecom.net](mailto:desscs51@baldwin-telecom.net) to receive an application.

We need to continue to be creative in our fund raising efforts. Please feel free to contact Friends’ Board Members with your suggestions – all ideas are welcome. We also welcome new members to our team –if interested, contact Chris Libbey at (651) 247-0395





## "Ewe Got This"

### Lambing Basics Workshop

Focused on sheep, but goat producers are also welcome to participate.

**September 20<sup>th</sup>**  
8:30 AM - 5:00 PM

**Dunn County  
Government Center**  
3001 US HWY 12E  
Room 54  
Menomonie, WI 54751

To enter the building, please use the  
**Health Department entrance** in the  
back of the building.

**Register at:**



<https://forms.gle/cPaDN3YFAHoCceia7>

**Register by September  
12<sup>th</sup>**

**Cost  
\$20**

#### Presenters

**Carolyn Ihde**

Small Ruminant, UW-Madison  
Extension and Iowa State Extension

**Ryan Sterry**

Regional Livestock Educator, UW-  
Madison Extension

**Kelly Froehlich**

American Sheep Industry Association

Prepare now before lambing season begins - join us for this comprehensive workshop discussing the lambing process and essential care for ewes and lambs.

Topics include:

- Biosecurity
- Lambing time nutrition
- Ewe and lamb health
- Lambing kit supplies
- The phases of lambing
- Lamb processing and bottle lambs
- Record keeping
- Practice with a realistic lambing simulator



**Young & Emerging  
Entrepreneurs**  
EMPOWERING THE FUTURE  
OF AGRICULTURE & RURAL COMMUNITIES

**Thanks to generous support from the American  
Sheep Industry Association, hands-on activities  
include a realistic lambing simulator.**



**Extension**  
UNIVERSITY OF WISCONSIN-MADISON

**IOWA STATE UNIVERSITY**  
Extension and Outreach

**Contact:**

715-232-1636

[ryan.sterry@wisc.edu](mailto:ryan.sterry@wisc.edu)

[wiersgalla@wisc.edu](mailto:wiersgalla@wisc.edu)

The University of Wisconsin-Madison Division of Extension provides equal opportunities in employment and programming in compliance with state and federal law. You may request an interpreter, materials in an alternative language and/or format, and/or other services to make this event more accessible. Contact us at [ryan.sterry@wisc.edu](mailto:ryan.sterry@wisc.edu) or 715-232-1636. Make your request by September 1, 2025. There is no added cost to you for these services.



WISCONSIN 4H

# PROJECT GUIDE



Robotics Project



Dairy Project

## NEW! WI 4-H Project Guide

Wisconsin 4-H has released a new resource for 4-H members and families. Check out the official project guide for more information on each project area, or open the quick guide version for simple questions and clarification. This guide will help us standardize project expectations across the state!



Extension  
UNIVERSITY OF WISCONSIN-MADISON





# National 4-H Week



October 5<sup>th</sup> - 11<sup>th</sup>

## 120+ Years to Celebrate

A week that will rally, inspire and connect 6 million 4-H'ers, 3,500 educators, 500,000 volunteers and 35 million alumni. Events in every county and state celebrating and amplifying the 4-H mission: preparing youth to be Beyond Ready for life and career.



## Day 1 - Beyond Ready: Go Green

**Monday, October 6, 2025**

On Monday of National 4-H Week, **Go GREEN** and show your 4-H state spirit! A simple, cohesive way for youth, professionals, volunteers, alumni & supporters across the country to celebrate their 4-H program being *Beyond Ready*. Wear a green hat, clothing, face paint - anything green goes. Let's paint the nation **GREEN**, on **Monday, October 6!**

Share your Go Green moment on social and tag National 4-H, your State 4-H program, and use **#4HBeyondReady #National4HWeek**

## Day 2 - Beyond Ready: 4-H For Good

**Thursday, October 9, 2025**

On Thursday of National 4-H Week, help us shine a light on all the good that 4-H does! A day to recognize all 4-H'ers who are doing good and making positive impact by helping their communities and beyond. Share your own story or celebrate someone who is making a difference - another 4-H'er, volunteer or educator We want to know, on **Thursday, October 9!**

Share on social, tag others in your 4-H community, tag National 4-H and use **#4HBeyondReady #National4HWeek**

