

Commodity Supplemental Food Program

For low-income qualifying seniors over 60. Call **WestCap** at 715-280-3238 to learn more.



Qualified seniors aged 60+ have access to food resources including:

- * **Farmers Market Nutrition Program** to purchase produce at certified vendors from June to October.
- * Hot, nutritious meals at **Senior Dining Sites** throughout the county.
- * **Meal delivery** if unable to visit dining sites, cook for themselves or have someone else prepare meals for them.

ADRC of Pierce County: (715) 273-6780



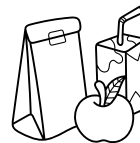
- * Wholesome foods for pregnant women, new moms, infants & children under 5
- * Breastfeeding support
- * Nutrition & feeding tips for families
- * Farmers Market Program vouchers for produce at certified vendors from June to October.

Pierce-Pepin WIC: 715-273-6758
wicmomstrong.com

School Resources

* Free or Reduced School Meals

Free or reduced price school breakfast and lunch are available to low income families. WIC families and children in households receiving FoodShare benefits can get free meals that meet nutrition requirements set by the federal government. **Contact your school's office for information.**



* Backpack Program



Eligible students receive a backpack of food on Fridays for the weekend in some schools. **Contact school nurse for more information.**

* FoodShare

Learn about additional statewide food, nutrition & health programs at www.access.wisconsin.gov.

Please read the USDA Nondiscrimination Statement at <https://www.usda.gov/non-discrimination-statement> or by using the QR code.



To update information in this community food resource directory, contact Sarah Fluegel at sarah.fluegel@stcroixvalleyfoodbank.org.

Visit Pierce.Extension.wisc.edu/nutrition-education/food-resources



FOOD WISE
Healthy choices, healthy lives.

UW-MADISON EXTENSION

FoodWise education is funded by the USDA Supplemental Nutrition Assistance Program- SNAP and Expanded Food and Nutrition Education Program - EFNEP.

The University of Wisconsin-Madison Division of Extension provides equal opportunities in employment and programming in compliance with state and federal law.



PIERCE COUNTY HUNGER PREVENTION COUNCIL
WE GO BEYOND THE FOOD

Pierce County Community Food Resource Directory Fall 2025



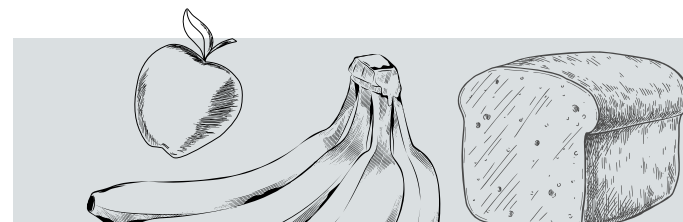
connects you to critical health and human services in your community 24 hours a day, 7 days a week, 365 days a year at no cost to you.

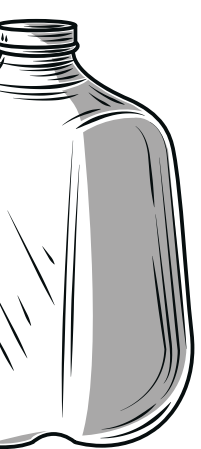
Receive 211 support by

Calling 211 or (877) 947-2211

Texting your zip code to 898211

Visiting 211wisconsin.communityos.org





Use the food pantry convenient to you to receive a free variety of shelf-stable and perishable groceries.

S = Shop in person C = Curbside pick up

Food Pantry	Address & Phone Contact		Days & hours open					
			Mon.	Tues.	Wed.	Thurs.	Fri.	Sat.
Elmwood Food Pantry	108 S. Main St Elmwood, WI	715-639-2307 Open 1st and 3rd Tuesdays, 4th Saturday of the month		3-6p (1st) C 9-11a (3rd) C				9-11a (4th) C
Pierce County Food Pantry	440 N Maple St Ellsworth, WI	715-273-2070	3-6p C	9:30a- 12p C	3-6p C	9:30a- 12p C		
Plum City Food Pantry	301 1st St Plum City, WI	715-647-2191					10a-2p C 2nd Thurs: 3-7p C	
Prescott Area Food Pantry	911 Pearl St Prescott, WI	715-262-4143		1-4p S	10a-1p S	1-4p S		
River Falls Community Pantry	705 St Croix St River Falls, WI	715-425-6880	10a-12p S 6-7:30p S	1-5p S	6- 7:30p S	10a- 12p S		
Spring Valley Community Food Pantry	S425 Church Ave Spring Valley, WI	715-778-5988 Open 2nd and 4th Wednesdays			10-11 C , 11-12 S 4:30-5:30p C 5:30-6:30p S 2nd & 4th			
Susan's Food Pantry Spirit of Grace Church	127 S. Second St River Falls, WI	715-425-6233 No registration required. No eligibility requirements.	1-4p S	10a-1p S	1-4p S	10a-1p S	10a-1p S	

Free Community Meals

- Servant of the Shepherd Church
103 N. 4th St, River Falls
Most Sundays at 12:15pm
Food pantry open 9-5p daily
- St. Paul's UCC Church
W5706 State Road 72, Ellsworth 3rd
Tuesday 5-6:30p spuccellsworth.org
- Spirit of Grace Church
127 S. Second St., River Falls
2nd Saturday 8-10a



**For emergency food needs,
call 715-307-4510. An
operator can connect you to
volunteers in the area.**

\$25 suggested donation for large share of grocery items. **All are welcome. There are no requirements based on income, home address or immigration status to participate.** Rubyspantry.org for more information.

Pierce Pepin Cooperative, Ellsworth
W7725 US Hwy 10

Distribution 1st Saturday, 9:30-11a
Sponsored by Bethel Covenant Church